

Control Your Appliances KAHIN SE BHI KABHI BHI



User's Manual

Dear Customer

Congratulations and welcome to Smarteefi family.

We thank you for the trust you have shown in buying Smarteefi products. We have designed our products to be controlled anytime from anywhere. Its easy scheduling facility allows you to minimize your energy bills by switching on/off your appliances automatically at scheduled time and its integration with voice assistants (Amazon Alexa and Google Assistant) gives you the convenience to control your appliances with simple voice commands

We request you to please register your account at www.smarteefi.com. If you face any issue with the product, please post your queries at www.smarteefi.com/support and our dedicated support team will help you.

We once again thank you for using Smarteefi Products.

Yours Sincerely
Team Smarteefi
CoreEmbedded Technologies Pvt. Ltd.
Ground Floor, Ishan Corporate Tower
C-23, Sector-13, Vasundhara,
Ghaziabad(U.P.)-201012
Email:support@smarteefi.com
Customer Support: +91-8130345141

Table of Contents

1. Understanding Smarteefi Products	4
Manual Switch	4
Settings Switch	4
Status LED	4
Wiring Color Codes	4
Terminal Codes	4
Serial Number and Activation Code	4
2. How to Install Smart Switches and Switch Boards	6
3. How to configure smarteefi device using Mobile App?	8
4. Browser Based WiFi Configuration.....	9
5. Status LED Color Indications?	10
Stable Blue	10
Blinking Green/Red	10
Stable Green/Red	10
6. FAQ	11
7. Special Note.....	11

Understanding Smarteefi Products

Manual Switch: All smarteefi products have manual on/off switches to control appliances manually apart from mobile app control and voice assistants (Amazon Alexa, Google Assistant). If the product has multiple outputs, it provides multiple on/off switches to control each output individually.

Settings Switch: Setting switch is used to configure WiFi settings. First on/off switch in all smarteefi products is considered as setting switch

Status LED: All smarteefi products have status led. This led indicates current device mode (settings/normal) and connectivity with the cloud.

Blue Stable: Settings mode

Green/Red Stable: Normal mode connected with cloud

Green/Red Blinking: Normal mode attempting to connect with cloud

Wiring Color Codes: Smarteefi products that comes with connecting wires (e.g. model ss21, ps11) have following wire color codes

Red: Live (Input)

Black: Neutral (Input)

Yellow: Live (Output)

Terminal Codes: Smarteefi products that comes with connecting terminals (e.g. model fb41, sb81, sb41,) have following terminal marking

L: Live (Input)

N: Neutral (Input)

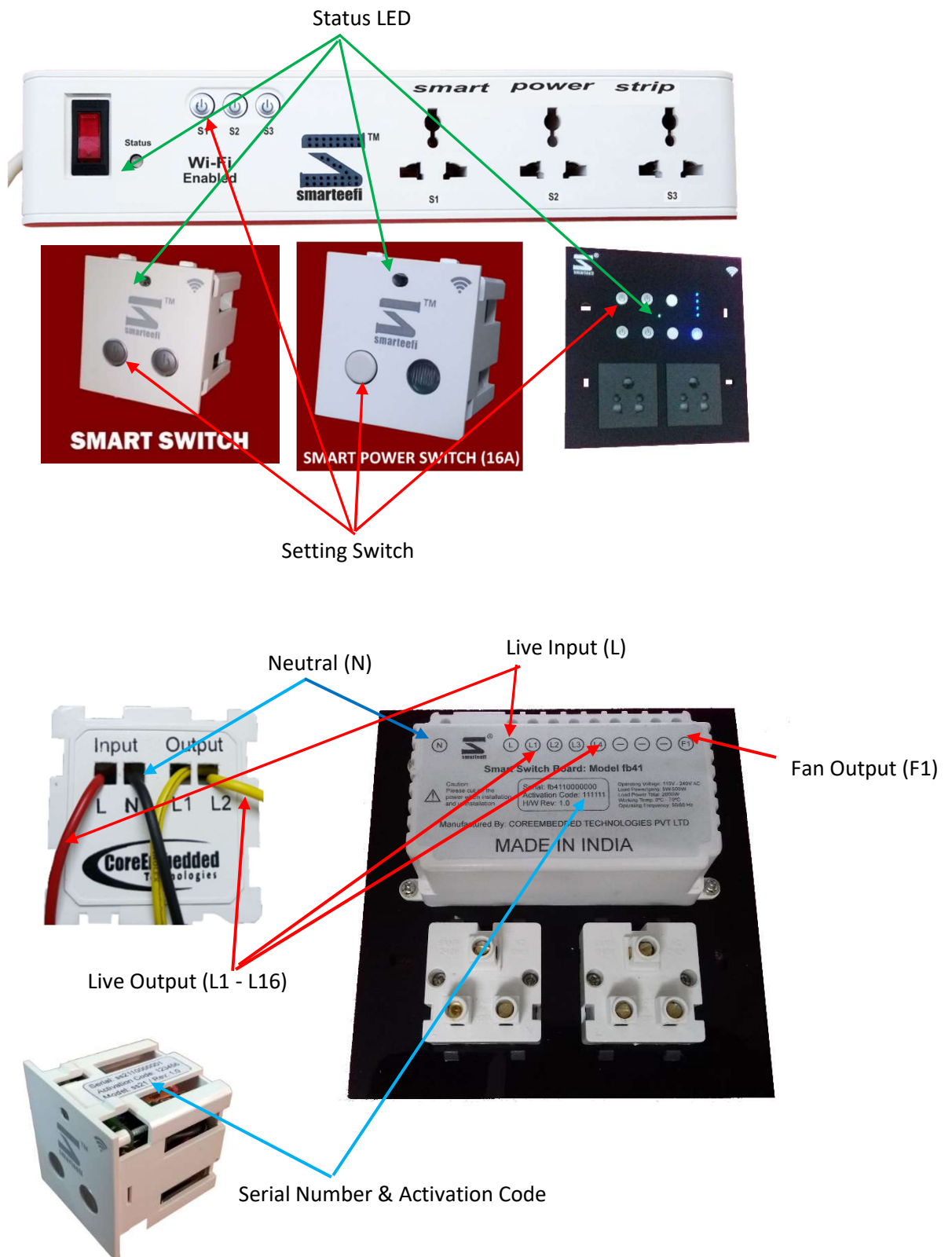
L1-L8: Live (Output)

F1-F2: Fan (Output)

Serial Number and Activation Code: All products have stickers with minimum following details

Serial: unique identification number of device

Activation Code: Required to add device in the customer account



How to Install Smart Switches and Switch Boards

Step 1: It is advised to call a Professional Electrician



Step 2: Please Switch-OFF your Mains and verify with good quality tester

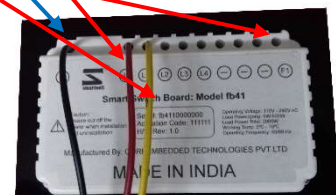
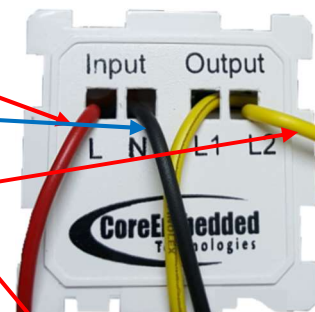


Step 3: Please open/unsecure modular switch plate from wall, remove ordinary switches/switch plate and install smart switch/switch board. Smart Switch takes space of two ordinary switches. Smart Switch Board replaces the complete switch plate

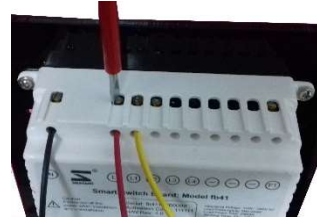


Step 4:

- Connect Mains Live wire to Switch's/ Switch Board's Live Input (L)
- Connect Mains Neutral wire to Switch's/ Switch Board's Live Neutral Input (N)
- Connect Switch's/ Switch Board's Live output wires (L1, L2, L3, ...) to the different appliance you want to control (Example, Tube light, bulb etc.)
- If you are using Smart Switch Board with Fan control, connect Fan output (F1/F2) to the Fan.



Step 5: Properly screw all the wires in smart switch board. If using smart switch, insulate the wires in smart switch with good quality tape and secure switch plate back to wall with screws



Connecting Socket in Smart Switch Board: This image shows how you can connect sockets in the switch board to make them smart socket. Earth (green) and neutral (black) wire will be connected directly whereas Live will be connected to output of smart switch board like L1, L2...



Now Switch-ON your Mains and follow the next section **how to setup configure**



How to configure smarteefi device using Mobile App?

Requirement: Application requires network connection (Wi-Fi or Mobile Data connection)

1. Download free Smarteefi App from Google Playstore or Apple App Store
2. Open the app and Login if you already have Smarteefi account. If you do not have Smarteefi account, register your account from mobile app
(PLEASE NOTE when you register a new account, we send activation email on your email ID with a link to verify and activate your account. After register, please activate your account. You will not be able to login if account is not activated)
3. Add a Device from your mobile App by entering following details. *(These details are available on the back of the product as well as on packaging box)*
 - a. Serial Number
 - b. Activation Code
4. After device is added in your account you will be prompted to configure the device for WiFi configuration. **Please follow the on-screen instructions to configure the device.**
5. You may also change the WiFi settings later. To start the configuration procedure, go to the Devices Tab>Settings->WiFi Settings and same WiFi configuration procedure will start

You may watch YouTube video (<https://www.youtube.com/watch?v=--GbxtbNDk4&t>) for first time Wifi configuration.

In case you are unable to configure WiFi settings from mobile app. You may also use Browser Based Configuration method to configure WiFi settings in your smarteefi device.

Browser Based WiFi Configuration

(USE THIS METHOD IF YOU ARE UNABLE TO CONFIGURE SMARTEEFI DEVICE USING MOBILE APP)

Step 1: Press setting switch (First on/off switch) continuously for 5 seconds

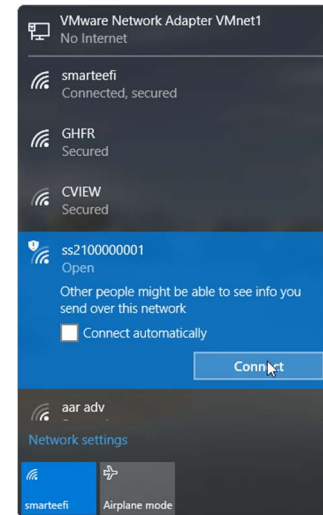


Step 2: Verify that after pressing settings switch for 5 seconds Status LED color is changed to blue



Step 3: Check for available Wi-Fi networks on your PC or Mobile. A new entry with the serial number of Smarteefi Device must appear in the available networks.

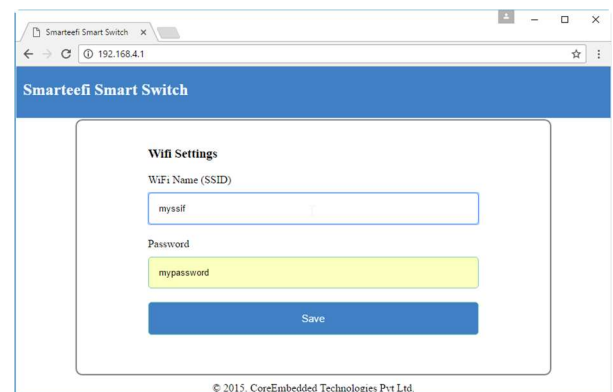
Connect your PC/Mobile to the Wi-Fi with Smarteefi Device serial number.
(you should be able to connect without password and it may show as limited connectivity)



Step 4: Open browser on your PC/Mobile and enter address <http://192.168.4.1>

Enter Wi-Fi name (SSID) and password of your home Wi-Fi network and press Save button. (**BOTH NAME AND PASSWORDS ARE CASE SENSITIVE. IF THERE IS ANY CAPITAL LETTER KEEP IT CAPITAL, IF THERE IS ANY SMALL LETTER KEEP IT SMALL**)

- If it shows successful message, close the browser window. Green/red light will start blinking. If name and password are correct then green/red light will become stable within 1 minute and that means your **DEVICE IS READY TO BE CONTROLLED BY SMARTEEFI APP**
- If green/red led continues to blink more than a minute, then you must recheck your setting by following the configuration procedure again.
- If it shows failure message, repeat Step 4 again



Status LED Color Indications?

Stable Blue

Smarteefi Device is in Settings mode. In this mode Wi-Fi name and password can be changed but device cannot be controlled

Blinking Green/Red

Smart device is in normal mode and trying to connect with Smarteefi cloud. it continues blinking for more than 1 minutes. Check following

- a. Ensure that Wi-Fi name (SSID) and password are entered correctly. Both fields are **case sensitive**
- b. Change the router location to ensure good signal strength then Switch-Off your MCB and after 5 seconds Switch-On your MCB

Stable Green/Red

Smarteefi device is in normal mode and connected with Smarteefi cloud. It is ready to be controlled using Smarteefi Mobile App/Web portal.

FAQ

Question: My home network Wi-Fi name/password is changed after that it does not connect and status LED keep blinking

Answer: Smart Switch remember Wi-Fi name (SSID) and password entered during setup and it will try to connect to router with same SSID/password. You need to change SSID/password stored in Smart Switch. Please follow steps in How to configure section again to change SSID/password.

Question: Status LED keeps blinking and Mobile App/Web portal shows it offline.

Answer: Following may be the cases

- 1) There is a spelling mistake in your Wi-Fi name/Password. Please note that both fields are case sensitive. Please re-verify your configuration as described in How to Configure section.
- 2) Signal strength of Wi-Fi network may be poor where your Smart Switch is located. You may need to change router location

Special Note

If Router is switched-off or disconnected, communication with Smarteefi Smart Switch cannot be made.

Smarteefi is a trademark of CoreEmbedded Technologies Pvt. Ltd

Please contact support@smarteefi.com for any enquiry